

What is a Direct Support Professional?

A Direct Support Professional or DSP actively support person(s) with intellectual and developmental disabilities in maximizing their independence, self-advocacy, and decision making in the community, at home, or work.



Choices

Support people to make informed, independent, decisions about their life



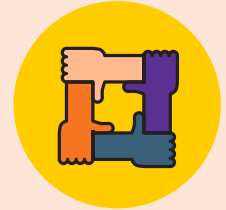
Goals

Encourage and support people in defining personal and employment goals and measuring success



Personal Care

Promote independence and provide assistance with personal care such as showering, dressing and other activities of daily living



Relationships

Encourage healthy relationships and natural supports, such as friends, family, and community members



DIRECT SUPPORT PROFESSIONAL



Documentation

Record activities, medication, and other required paperwork using a computer or mobile device



Community

Support participation in existing or new activities that promote inclusion in the community



Health & Safety

Provide support in accessing medical care, taking medications, and ensures safety through the dignity of risk